

# Public Document Pack

**Argyll and Bute Council**  
Comhairle Earra Ghaidheal agus Bhoid

*Customer Services*  
*Executive Director: Douglas Hendry*



*Kilmory, Lochgilphead, PA31 8RT*  
*Tel: 01546 602127 Fax: 01546 604444*  
*DX 599700 LOCHGILPHEAD*  
*e.mail –douglas.hendry@argyll-bute.gov.uk*

22 February 2011

## **SUPPLEMENTARY PACK**

I enclose herewith reports in regards to Agenda Item 11 and Agenda Item 12 of the **MID ARGYLL, KINTYRE AND THE ISLANDS LOCAL AREA COMMUNITY PLANNING GROUP.**

Douglas Hendry  
Executive Director - Customer Services

## **BUSINESS**

- 11. RATIONALISATION / PARTNERSHIP LINKAGES TO LOCAL AREA COMMUNITY PLANNING GROUP - ARGYLL AND BUTE COUNCIL, GOVERNANCE AND LAW(Pages 1 - 10)**
- 12. MAKI LOCAL AREA COMMUNITY PLANNING GROUP AREA PLAN - ARGYLL AND BUTE COUNCIL, GOVERNANCE AND LAW(Pages 11 - 24)**

## **MID ARGYLL, KINTYRE AND THE ISLANDS LOCAL AREA COMMUNITY PLANNING GROUP**

Chair: Councillor Donald MacMillan Vice-Chair: Councillor Rory Colville

Contact: Theresa McLetchie - Tel: 01546 604511

This page is intentionally left blank

---

**Argyll and Bute Community Planning  
Partnership**

**Mid Argyll, Kintyre and the Islands Local  
Area Community Planning Group**

**Date: 2nd March 2011**

argyll and bute  
**communityplanning**partnership



---

**Title: Update Report on Rationalisation/Partnership Linkages to LACPG**

---

**1. SUMMARY**

- 1.1** This report summarises progress which has been made in making linkages of Strategic Local Partnerships to the Mid Argyll, Kintyre and the Islands Local Area Community Planning Group.

**2. RECOMMENDATIONS**

- 2.1** That the Local Area Community Planning Group note the progress which has been made, and agree that this work should remain a standing item for consideration at future meetings of the Group.

**3. BACKGROUND**

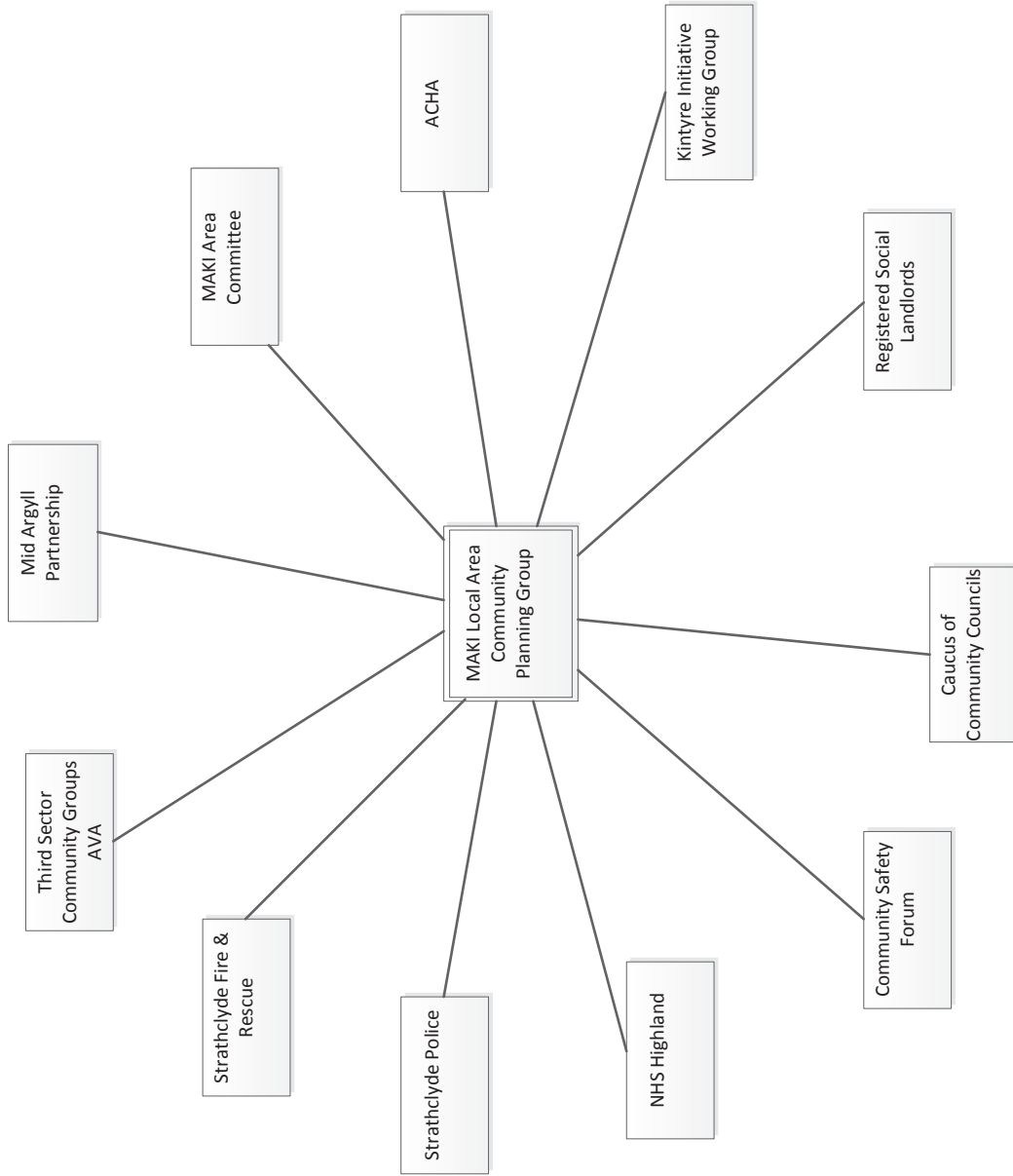
- 3.1** At its meeting in January 2011 the Mid Argyll, Kintyre and the Islands Local Area Community Planning Group noted the need for effective linkages of local partnerships, who are frequently the deliverers of key local outcomes contained in the developing LACPG plans, to be made to the LACPG. This work has been progressed, and the attached document shows the developing partnership structure which is currently in place. It should be noted that the information contained in this draft document relates only to information submitted to date by partners in the group, and there may well be other key partnerships in the area which should be included in the exercise.
- 3.2** It remains the case that as a result of the work in aligning partnerships there may be some rationalisation of these groups at local level.
- 3.3** The Group is asked to consider the information submitted, and to make recommendation on which partnerships they feel need to be represented at each LACPG meeting, and, where there is duplication of groups and partners attending meetings at different levels of the LACPG structure, to make recommendation on how this should be rationalised.
- 3.4** Following this, the agreed process of Highlight and Exception reporting on key aims and outcomes will be introduced, giving the local groups the information they need to ensure that local priorities are, in fact, being progressed.

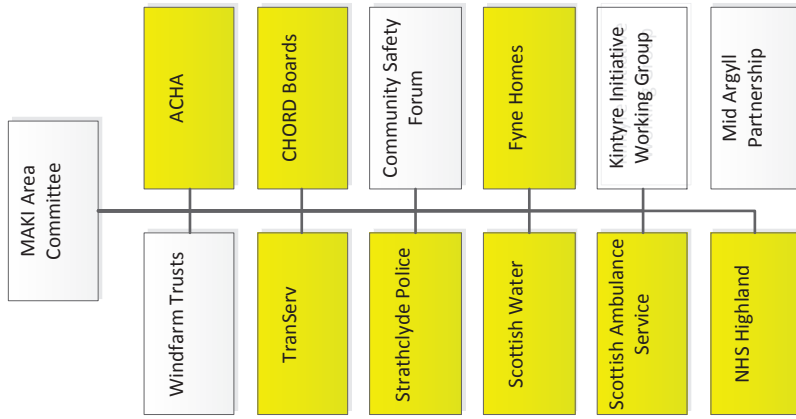
**4. CONCLUSION**

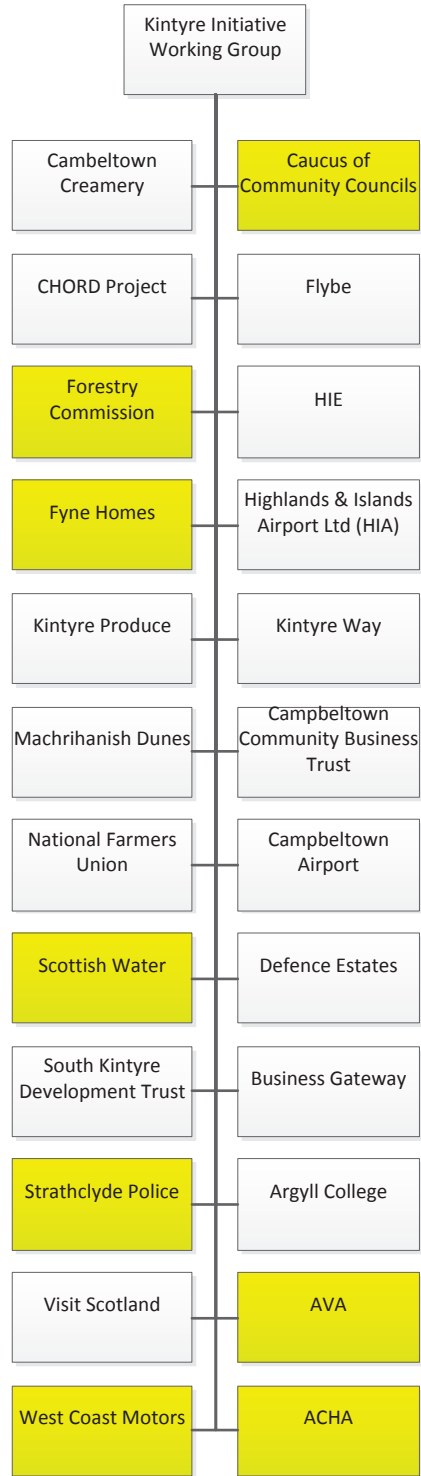
- 4.1** Work has been progressed in linking known local partnerships to the Local Area Community Planning Group, but this should remain as work in progress, to reflect ongoing local partnership arrangements which are subject to change. The Local Area Community Planning Group should consider where rationalisation of partnerships can be carried out to ensure more effective partnership working at a local level.

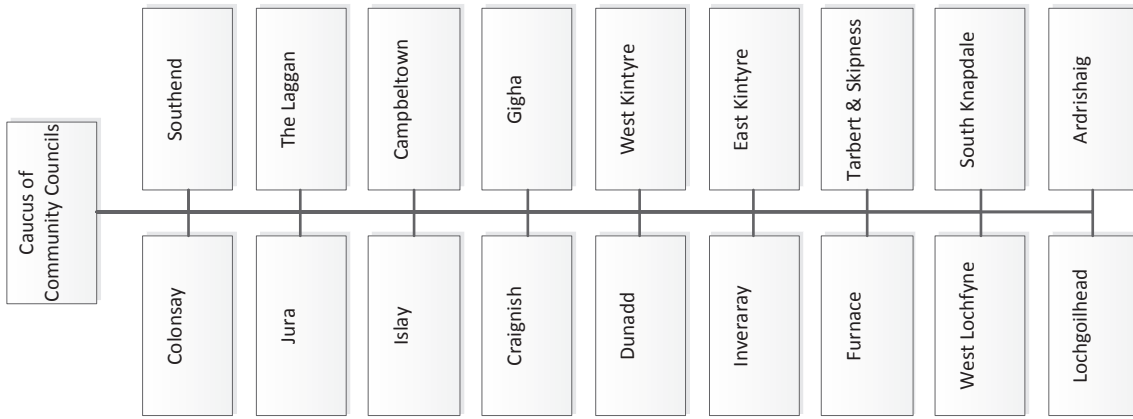
For further information contact: Shirley MacLeod, Area Manager,  
Customer Services

Telephone 01369 707130

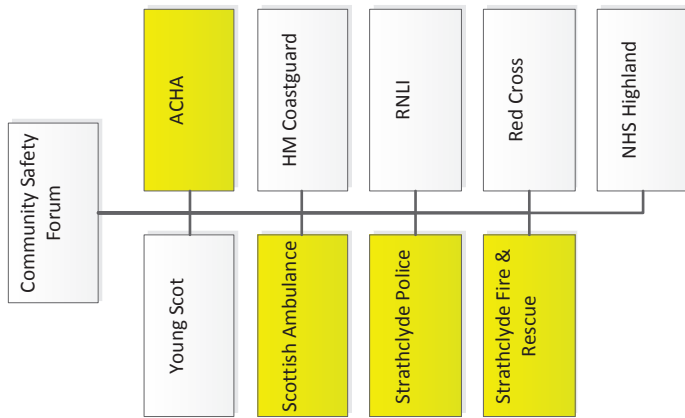


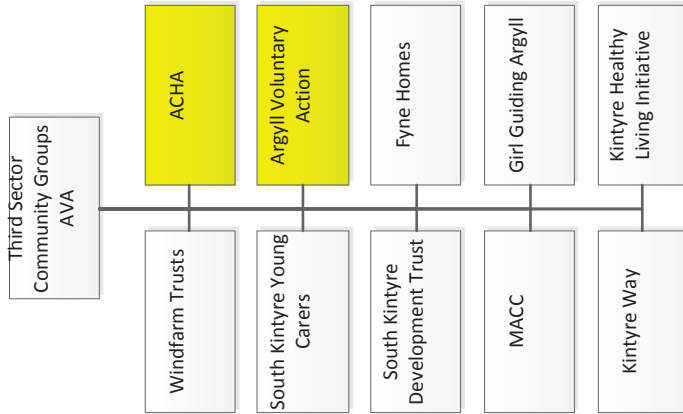


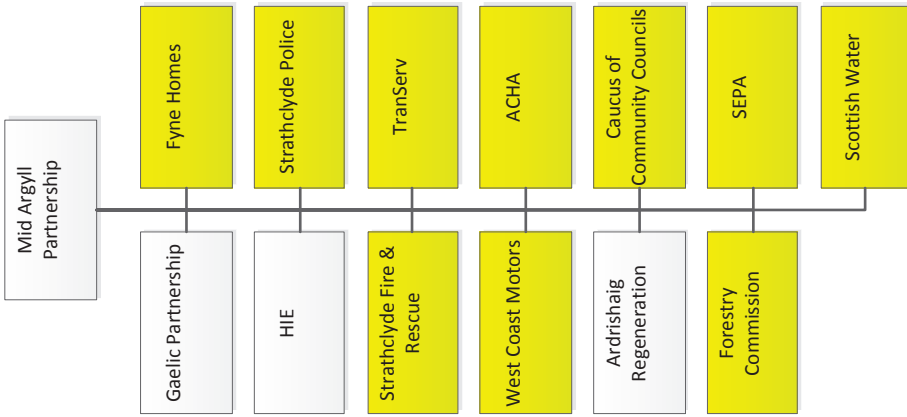












This page is intentionally left blank

---

**Argyll and Bute Community Planning  
Partnership**

**Mid Argyll, Kintyre and the Islands Local  
Area Community Planning Group**

**Date: 2<sup>nd</sup> March 2011**

argyll and bute  
**communityplanningpartnership**



---

**Title: Progress Report on Mid Argyll, Kintyre and the Islands Community  
Planning Group Action Plan and Scorecard.**

---

**1. SUMMARY**

- 1.1** This report summarises progress which has been made by partners in delivering the agreed Mid Argyll, Kintyre and the Islands Local Area Community Plan.

**2. RECOMMENDATIONS**

- 2.1** That the Local Area Community Planning Group note the progress which has been made by partners in financial year 2010/11 in delivering the agreed Local Community Plan for Mid Argyll, Kintyre and the Islands, and consider whether any amendments to the plan may be required. A revised scorecard which reflects the plan, as amended if necessary, will be submitted for consideration at the May LACPG meeting.

**3. BACKGROUND**

- 3.1** Group members and partners on the MAKI Local Area Community Planning Group agreed an action plan for delivery, which highlights agreed aims and objectives for the area, as developed in line with the CPP's Single Outcome Agreement, and following community consultation at the first Forward Together Event held in June 2010. Since the agreement of the plan, in summer 2010, partners and lead organisations have been expected to deliver the actions assigned to them through that agreement process.
- 3.2** Appendix 1 contains the most recent updates for the action plan, which have been gathered from partners during February 2011. It shows progress to date, and also highlights current risks to completion of key aims and actions.
- 3.3** Group members will recall that as part of the Forward Together 2 Event held in October 2010, attendees were asked to identify local priorities which they felt should be increased or built upon, priorities which should be maintained, those which could be reduced, and those which could be stopped all together. This work was carried out in light of the financial situation which public sector

organisations expected to take effect from April 2011.

To summarise the outcomes of that event, the following points should be noted.

There is nothing to suggest that there is opposition to anything in the plan; there appears to be tacit agreement with the direction that the plan is taking.

No comments explicitly referred to the outcomes of the plan, rather comments were focused on actions contained within the plan, and their associated success measures and things that could have been included in the plan as actions, but were not.

There were far fewer suggestions for things we could do less of or stop doing altogether than there were suggestions for things we should do more of or carry on doing.

Where suggestions were made under the 'do less of' / 'stop' headings, they related weakly to the plan, making general rather than plan-specific points. Moreover, where suggestions could be related to specific actions, these actions had been highlighted elsewhere (and in greater numbers) as areas for continued or increased levels of activity.

On the basis of the electronic voting, one area stands out as an obvious priority: affordable housing. Integrated transport was also identified as another priority area. Although there were fewer votes for integrated transport than for affordable housing, transport provoked a lot more comment within the workshops.

Again, on the basis of the voting patterns, areas identified for continued action at present levels were:

- The A83
- Air ambulance
- Support for tourism.

However, the range of comments made during the workshops and on the post-it notes suggest that all areas of activity in the plan have their advocates, so no clear message can be formulated with regard to priority areas.

As with other areas, far fewer comments were made with regard to areas of activity that could be reduced or stopped. Moreover, where comments were made, there was either:

- No relationship to actions in the plan, or
- More support for continued activity in areas mentioned than there was for reduced activity.

For example, of the five suggestions for things that could be stopped, only one related to an action in the plan. Moreover, this related to the Kintyre Centre of Renewables, which had prompted a number of comments elsewhere, supporting its continuation.

Similarly, three suggestions were made regarding activities that might be continued but at a reduced level:

- Business development
- Waterfront and town centre development
- Duplication in social services.

However, only the first two of these related to plan actions, and in both cases there were more comments advocating their continuation than their reduction.

There was only one action in the plan that was not covered in the workshop discussions. This was:

- 'Ensure that partnership working is undertaken to taken environmental issues such as fly tipping, litter, dog fouling and noise pollution'.

Two other actions did not generate specific comments, although in both cases they can be related to broader supportive comments or suggestions for how things could be done differently. These were:

- 'Retention and development strategy being developed by Strathclyde Police to recruit officer from the local area to serve within Campbeltown'.

This prompted a suggestion that perhaps the police could look at recruiting 'cadets' in a similar fashion to the way the fire service does.

- 'Support service level agreements for Kilmartin and Auchindrain Museums and Ionad Chialum Chile Ile'.

Although no comments related directly to these organisations, the general comment that support should be given to support tourism could be interpreted as being generally supportive to museums.

There were few issues raised at the MAKI event that were completely at variance with the plan's contents. These included:

- Comments about the desirability of the police and fire services sharing office facilities, sharing responsibilities for first response to incidents, and the closure of underused police stations
- The desirability of developing ferry and cultural links with Northern Ireland
- The need to provide more higher level education, in order to encourage people to stay in the area.
- Additional locations for affordable housing were mentioned (e.g. Lochgilphead High School site; Port Ellen)
- The action 'Support and facilitate, where appropriate, community led strategic planning for defined areas', where

the success measures made explicit reference to the Tarbert, Gigha and Jura Community Plans, also provoked comments. South Kintyre, Campbeltown, Ardrishaig and Ardfern were also mentioned as areas where such plans are being developed.

- There did not seem to be any reluctance in general to local groups being encouraged to manage things, but the ideas seemed to vary with regard to the kind of facilities they should be managing. Halls were mentioned in this context.
- Where mention was made of supporting events, event participants added to the list of events that could be covered.

The nature of these gaps suggests that either:

- The contents of the plan needs to be changed to reflect the range of locations measured, or
- The idea that the contents of the plan will change over time as specific projects are completed, so if a specific location is not included in the current plan, that does not preclude its inclusion in future years. This requires the management of participants' expectations.

In light of these comments, and the comments made across Argyll and Bute in response to the Council's budget consultation exercise, group Members may wish to consider whether any amendments to the currently agreed plan are required.

Following discussion and any amendment of this plan, it is intended that a revised Scorecard, which reflects the agreed Local Community Plan, and will enable the group to carry out ongoing effective scrutiny of local performance against agreed outcomes, will be discussed at the May LACPG meeting.

#### **4. CONCLUSION**

- 4.1** There has been some progress by partners in delivering the agreed actions and outcomes of the Mid Argyll, Kintyre and the Islands Local Community Plan, and this information is for noting. Following comments made at more recent consultation events partners may deem it necessary to amend the current plan to allow for effective delivery of local priorities in light of the current financial climate. A revised Scorecard will enable the group to carry out regular scrutiny of local performance against agreed outcomes.

For further information contact: Shirley MacLeod, Area Manager,  
Customer Services

Telephone 01369 707130



Area outcome	Actions to achieve outcome	Success measures	Key dates	Lead partner	Lead officer	Update date	Update content
1. Mid Argyll, Kintyre and the Islands is an area of sustainable economic activity and is recognised as an attractive place to live, work and do business	1. Retention and development strategy being developed by Strathclyde Police to recruit officers from the local area to serve within Campbeltown	1. Numbers of officers retained within the local area. 2. Numbers of officers recruited from outwith the local area.	Annual update	Strathclyde Police	C/I Baillie	Jan-11	Strathclyde Police have now stopped recruiting and therefore the emphasis is very much on retaining and developing staff within the area. <i>Do not think here to measure would figures are available in detail</i> showing overall reduction in crime and increase in detections. (This is a large document in itself but I could pick out the highlights - eg serious assaults, vandalism - as indicators to include in the plan with
	2. Community Policing Plans in place to target Community priorities and ensure Campbeltown and South Kintyre is a safe place to live, work and do business	1. Reduction in crime rates 2. Increase in detections 3. Numbers of Crime Prevention surveys/Secure by Design surveys carried out	Annual update	Strathclyde Police	C/I Baillie	Jan-11	2. Town Marina Technical/Feasibility study complete. Although further work required to be carried out.
	3. Waterfront and Town Centre Regeneration: Campbeltown and Regeneration: Ardfishaig	1. Kinloch Road Regenerated 2. Clown Marina Technical/Feasibility study. 3. TH1/ CARS scheme delivered 4. INTERREG funding	1. 2012 2. End 2010 3. Spring 2014. 4. 6/2011	Argyll and Bute Council and HIE	1, 2, 3 Nicola Debnam, 4. Stuart Green	Jan-11	
	4. Development of Kintyre as Centre for Renewables Excellence (National Renewable Infrastructure Plan (NRIP) identifies Campbeltown/Machrihanish as a key location for operations	Increased investment and industry related jobs and training	REAP reporting	Argyll and Bute Council	Robert Pollock / Audrey Martin	Jan-11	
	5. Quality support given to business development	1. Number of businesses receiving support from Business Gateway and HIE. Business Gateway deals with small, volume businesses. Whilst HIE account manages businesses with growth potential and ambition. However, Business Gateway does refer businesses with growth potential to HIE. Success measures for Business Gateway includes the number of start-up and existing businesses. Success measures for HIE includes teh number of account managed businesses supported. 2. Focusing on - number of businesses supported/ delivery of business workshops/events/ job creation.	Annual report	Argyll and Bute Council / HIE	Ishabel Bremner / HIE - Kerrien Grant	Jan-11	

<p>6. Support and facilitate, where appropriate, community led strategic planning for defined areas</p>	<p>1. Number of community plans in existence 2. Number of communities assisted to produce community plans</p>	<p>Bi annual update</p>	<p>Argyll and Bute Council</p>	<p>Alison Younger and Audrey Baird</p>
<p>7. Engage with RSL's to promote need for Affordable Housing in communities</p>	<p>1. Tarbert included in SHIP 2. Craignish included in SHIP 3. Campbeltown within SHIP 4. Islay within SHIP</p>	<p>Mar-11</p>	<p>Argyll and Bute Council</p>	<p>Moiria MacVicar</p>
<p>8. Modernisation and development of NHS services across MAKI</p>	<p>1. Sustainable service changes including reductions in bed numbers to match demand; 2. development of new community services. 3. Completion of dental access centre</p>	<p>Annual update</p>		<p>John Dreghorn</p>

Scotland's Islands commences in April 2011 and runs until March 2012. The vision of the project is to raise the profile of the islands, attract new visitors, bolster community and economic development, build on the achievements of Highland 2007 and Homecoming Scotland 2009 and strengthen links between the islands and mainland cultural organisations.

All six Local Authorities with island communities (Argyll and Bute, Highland, North Ayrshire, Orkney, Shetland and Western Isles) are working in partnership. Argyll and Bute Council has committed £40,000 towards the project.

Two Local Area Funding Rounds were held in November 2010 and February 2011. Argyll and Bute Round 1 received 16 applications. After the second closing date on 14 Feb-11 decisions will be made (on 18 RSL's and Council jointly produce the SHIP. Tarbert, Craignish and Park Square Campbeltown have all been included in the most recent SHIP which was approved by the Executive in December 2010. Funding for affordable housing is likely to reduce by 40% although at the time of writing, details are not available. Subject to funding being available the 32 property development at Park Square is scheduled to begin in 2011/12 but will require front funding from the Council if this timescale is to be achieved. The scheme is currently out to tender. Craignish - a feasibility study and design is currently

Jan-11

<p>2. Mid Argyll, Kintyre and the Islands is well connected both internally and beyond our immediate area</p>	<p>1. A&amp;B is well maintained and every effort taken to reduce full road closures 2. Island communities well served by regular, appropriately priced, ferry services which 3. Maximise harbour assets to improve connectivity and ensure fit for purpose 4. Integrated transport links to employment centres, health services and other transport networks</p>	<p>1. Preventative measures at Rest and be Thankful 2. full road closures minimised and scheduled in consultation with communities 3. Trunking of Kennacraig / - Jura 1. Replacement of MV Eilean Dhuira 1. Port Ellen 2. Port Askaig 3. Campbeltown 4. Carradale 5. Tayinloan 1. Public transport strategy priorities 2. No. And availability of Community transport initiatives</p>	<p>As appropriate</p>	<p>Transerv, through Argyll and Bute Council</p>	<p>Head of Service - Roads and Amenity</p>
<p>3. High quality environment which supports employment, bio diversity, culture, arts and heritage</p>	<p>1. Ensure that partnership working is undertaken to tackle environmental issues such as fly tipping, litter, dog fouling and 2. Support to events which promote area and community participation 3. Support development of community managed facilities and initiatives</p>	<p>No. of joint working initiatives undertaken 1. sustainability of key events: Mull of Kintyre Music Festival , Tarbert Scottish Series, Tarbert Seafood festival, Islay Jazz Festival 2. Designated community police officer to assist with community events 1. Number of parks/allotments/facilities being managed by local groups 2. Business case for Crown all weather pitch concluded 3. Sustainable future for Mid Argyll Swimming Pool and MacTaggart Leisure Centre</p>	<p>Annual report Annual Report 1. 3. Annual Report 2. tbc</p>	<p>Strathclyde Police 1. Argyll and Bute Council 2. Strathclyde Police Argyll and Bute Council Community Groups</p>	<p>C/I Baillie Audrey Baird; CI Baillie 1. A Baird 2. S MacTaggart 3. W Young</p>
<p>4. Support service level agreements for Kilmartin and Auchindrain Museums and</p>	<p>Continuous support for public and private museum sector</p>	<p>Annual report</p>	<p>Argyll and Bute Council</p>	<p>Pat McCann</p>	<p>Jan-11</p>

public transport network in Mid Argyll, Kintyre and Islay during the last year. The operator of the limited service to MacDonald Terrace within Lochgilphead was changed from Anderson Coaches to West Coast Motors and the timetable improved by spacing journeys regularly. Additional journeys were operated by Anderson Coaches between Lochgilphead and Tayvallich in connection with the seasonal Jura Fast ferry.

The number of Community Transport initiatives has remained unchanged with funding awarded to three groups, the Mid Argyll Transport Volunteers, Islay Disabled Endeavours and Actions and Jura Development Trust for the Tayvallich – Craighouse seasonal Jan-11 ferry service. The Campbeltown

Grants application form and criteria has been widely circulated in preparation for the first anticipated deadline for applications of February 25

Jan-11 (dependent on Budget Meeting on sportsScotland Lottery Fund and await outcome plus bid to Council on 10th Feb in Capital. 3. Mid Argyll Swimming Pool - Ongoing work with Mid Argyll and Islay and Jura Community Enterprises on business development

Jan-11

<p>4. Older and vulnerable people across the whole area live full and independent lives</p>	<p>1. Redesign of service provision to develop appropriate community based services across the MAKI area</p> <p>2. Identify vulnerable individuals within our communities and ensure referrals and assessments are completed to access appropriate agencies enabling individuals to remain in the</p>	<p>1. Completion of capital works in Mid Argyll Hospital. 2. Development of new community dementia services/posts. 3. Reduction in continuing care bed in Campbeltown and Mid Argyll</p> <p>Number of a) adults at risk b) young carers c) mental health referrals made to relevant agencies</p>	<p>1. 28/02/2010 2. 30/06/2010 3. 31/03/2010</p> <p>Annual Report - May</p>	<p>NHS Highland</p> <p>Argyll and Bute Council, NHS Highland</p>	<p>John Dregghom</p> <p>Rod Clayton</p>	<p>Number of individuals currently with Social Work a) 364 adults case managed, 273 receive a service at home, 163 receive a service in a care home b) 132 young people are currently case worked c) mental</p>
---	---	--	---	--	---	---

Jan-11

AREAXXX LACPG Area Community Plan

<b>Capital investment</b>						
Unique Ref No.	Location	What is involved	Estimated capital budget			Risks
			2010/11 £000	2011/12 £000	2012/13 £000	
	Campbeltown	New Dental Centre (NHS)	£3.4 million			Nil of note
	Lochgilphead	New Mental Health Unit (NHS)		Est £5 million	Est £5 million	Costs yet to be confirmed
	Campbeltown	New build at New Parliament Place	£6.9 million			
		Millknowe Terrace - modernisation of building	800k approx			
		Dalaruan Street	value not yet known			
		New development at Park Square site	costs not yet known			

This page is intentionally left blank

## Mid Argyll, Kintyre and the Islands Local Area Community Plan

Unique Ref No	Community Engagement Outcomes	Actions to achieve outcome	Success measures	Key Dates	Lead	Risks
	Extend community involvement	Volunteer Fair raise awareness of CPP and local involvement	Event completed campbttwn/lochgilphead		AVA	
		Third Sector Forum support meetings	meeting dates and notes		TSP/AVA	
	Build Capacity	Launch of the Demonstration Project (Harnessing the Potential of the Third Sector) at Fast Track Funding Event in Campbeltown in Sept 2010	Major funders, including Sport Scotland, Heritage Lottery Fund, BIG Lottery Fund, LEADER and other grant providers attended with 70 people from MAKI attending workshops and receiving 1-2-1 advice	Sep-10	ABSEN/CD Team	
	Build Capacity	Community Action Plan Training	Training delivered through CD Team	Feb-April 2011	CD Team	
	Build Capacity	Support services to volunteers and community/social enterprise groups/organisations	Training delivered by TSP	Nov - mar 10/11	TSP/AVA/ABSEN/JCVS	
	Community Consultation	Up to four consultation events with hard to reach groups in MAKI using a drama technique developed by Inspiralba		April-June 2011	Inspiralba/CD Team	
	Community Consultation	Two 'Forward Together' Public Consultations held in Tarbert and Lochgilphead in 2010. Video Conferencing to Islay & Jura.	60-70 people attended each event with the Area Community Plan amended to reflect feedback from the events	June & Oct 2010	AVA and CD Team	
	Sharing skills and resources	Community Toolkits/ Argyll communities website	website hits		AVA	
	Training for LACPG members on Better Community Engagement	One day training programme being delivered in Lochgilphead	Training results in better understanding of the CPP and the role of the LACPG	March 2011	CD Team	

This page is intentionally left blank



**Action / Priority**  
Trunking A816

**Proposed by**  
Cllr Alison Hay

**Date Proposed**  
03-Nov-10

This page is intentionally left blank